

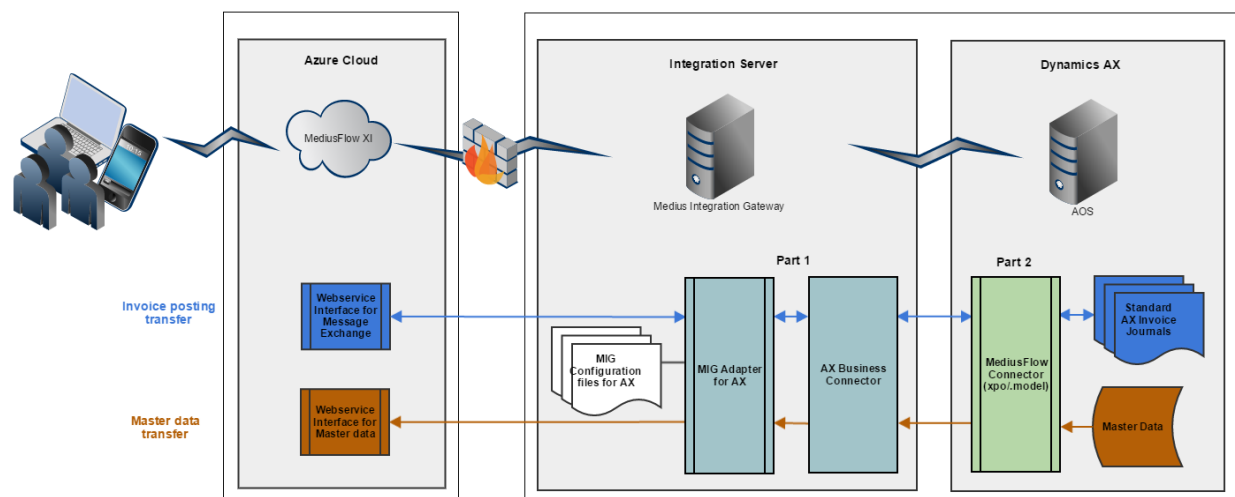
# AX Integration - Product definition

This product definition describes the content of the AX integration package and the supported functionality. This product definition was last updated December 21th, 2017.

## 1 Integration Overview

This solution consists of two parts. One part is an adapter for Medius Integration Gateway (MIG), the Medius integration engine. The other part is a xpo package (AX2009) or ax.model file (AX2012) that is imported into AX with custom objects. The solution makes it possible to transfer master data (such as suppliers, accounts etc.) from AX to MediusFlow. It also makes it possible to transfer invoice data from MediusFlow to AX where the invoice data is handled automatically inside AX. Once the posting is done AX will also return a voucher or error message to MediusFlow.

Below is a picture of the whole system with the two parts of the solution marked as part 1 and part 2.



- **Part 1**
  - Code written in C# .NET
  - Extends the .NET Business Connector to communicate with AX
- **Part 2**
  - Provided as an xpo (AX2009) or .model (AX2012 R 2/3) file
  - Code written in x++
  - Consists of AX objects
  - Custom views containing master data, which *Part 1* uses to fetch master data
  - Custom classes which *Part 1* uses to automatically handle invoices

## 1.1 Version dependencies

AX Version	Integration Version	XI Version	Comment
AX2009 (5.0.x.x), AX2012 R2 (6.2.x.x), AX2012 R3 (6.3.x.x)	8.1	Public Cloud	

## 1.2 Integration Package Content

***The Integration package includes the following for Medius Integration Gateway:***

- Custom adapter that extends the AX Business Connector to connect to an AX AOS
- Configuration files for the AX integration

***The Integration package includes the following for AX2009:***

- XPO file
- label files

***The Integration package includes the following for AX2012 R2/R3:***

- ax.model file

## 2 MediusFlow modules & functions

The functionality of the integration is based on Medius' experience and the suggested best practice of configurations between MediusFlow and the ERP system but does not cover all configuration settings supported by the standard ERP system.

Below you find a summary of the MediusFlow applications that are included in AX integration standard package.

Information in column "**Basic Setup**" means that the feature/functionality is included in the basic deployment and is based on Best Practices.

Information in column "**Custom Setup**" means further information about the customer's processes and system(s) setup is required in order to implement and thus requires additional consultant configuration work.

MediusFlow application	Basic Setup	Custom Setup	Comment
<b>Invoice</b>	Yes		Preliminary, cancel and final posting
<b>Match</b>	Yes		Preliminary, cancel and final posting
<b>Procurement</b>	No	Yes	Match invoice against MediusFlow PO is posted as expense.
<b>Contract</b>	Yes		Included in package 6.0 and later, earlier as extension

### 3 Master Data

Below you find a summary of the different master data entities.

Master Data Entity	Basic Setup	Custom Setup	Description	Limitations
<b>Company</b>	NO	NO	New companies added in AX needs to be manually added in MediusFlow and set up for integration	
<b>Currency codes &amp; rates</b>	YES		Currency codes and current Currency Rates are transferred	
<b>G/L Accounts</b>	YES		All G/L accounts are transferred. Will be set to inactive if status is "Blocked" or "Do not allow manual entry" is set.	
<b>Dimensions</b>	YES		Includes a maximum of 10 dimensions excluding the G/L account.	If the Project module is used, only 8 dimensions is included as the Project category and Line property allocates 2 dimensions in MediusFlow.
<b>Dimension validations in AX2009</b>	YES		Includes the following dimension validations: Optional, To be filled in and Fixed	No functionality for the following dimension validations: Table, List, or Default
<b>Dimension validation and Account structures in AX2012 R2/R3</b>	YES		Includes Fixed default values set on the G/L Account and Account structures stated as <i>All values Allowed</i> and <i>Allow blanks</i> .	Currently no support for Advanced rules associated with Account structures.  Not Fixed (default) values will not be transferred to MediusFlow.  No functionality for Specifying which values are allowed, but it can be achieved in most cases by setting up equivalent Authorizations groups in MediusFlow.
<b>Fixed Assets</b>	YES		Fixed Assets are available in the the first coding segment with a prefix "A."	Transaction type for Acquisition adjustments are set in MediusFlow Parameters, only one type

Master Data Entity	Basic Setup	Custom Setup	Description	Limitations
				can be selected for all Fixed asset transaction.
<b>Projects</b>	YES		Projects are available in the the first coding segment with a prefix "P.".	Dimensions set on the Project will be visible but not editable.  All project categories that are transferred will be available to select.  Default Line property is not transferred
<b>Project Category</b>	YES		Expense type categories are transferred.	
<b>Line Property</b>	YES		All Line properties are transferred.	
<b>Accrual Schemes</b>	YES		The user selects a start date and Accrual identification when coding the invoice.	
<b>Tax Groups</b>	YES		Tax groups with references to Tax codes are transferred	
<b>Item Tax Groups</b>	YES		Item tax groups with references to Tax codes are transferred	
<b>Tax Codes</b>	YES		Tax Codes are only available in user interface when a G/L Account flagged as a VAT account is selected.	
<b>Payment Term</b>	YES		Transfers all payment terms to be able to calculate due date on invoice.	Currently only include the Payment method "Net".
<b>Supplier</b>	YES		All Suppliers are transferred to MediusFlow	Requires default Tax group/Item tax group and payment terms to transfer.
<b>Suppliers Item numbers</b>	YES		Item table for cross reference in connection between PO lines and invoice lines. Transferring suppliers item number when primary vendor is set.	
<b>Purchase orders</b>	YES		Integration will transfer Purchase orders and purchase order lines for POs that are approved or confirmed as long as the lines are not canceled or invoiced.	

Master Data Entity	Basic Setup	Custom Setup	Description	Limitations
Goods receipts	YES		Integration will transfer Goods receipt lines that are not fully invoiced.	
Misc Charge Codes	YES		Available to use in MediusFlow in G/L account field	

#### 4 Message Exchange

Below you find a summary of the different invoice posting scenarios.

Posting Scenarios	Basic Setup	Custom Setup	Description
Preliminary and final postings sent from MediusFlow	YES		Postings done via Initial registration and Invoice approval Journals  Tax will be lifted at time specified by the configuration in Accounts Payable Parameters.
Cancellation of registered invoices	YES		Cancellation done via Invoice approval Journal
Only Final Postings sent from MediusFlow	YES		Posting done via Invoice Journal
Accrual posting	YES		Possible to split costs over several periods using AX Accrual schemes. The Split over periods is not visualized in MediusFlow,
Period management	YES		Possible to move to next open period including considering Module statuses. This is defined in AX and will not be reflected in the Posting date stored in MediusFlow.
3-way matching	YES		Integration requires a goods receipt to match to when posting the PO invoice in AX.
2-way matching	YES		Uses 2-way matching policy for AX2012 R2/3 and Direct Delivery as Delivery Type for AX2009 to determine a 2-way matching PO line.
Adjustment requests with block and release payments	NO	NO	Functionality to send a payment block on original invoice is not included
Contract based invoice (Contract module)	YES		Invoice is posted as Expense invoice in AX.
Procurement invoice (Procurement module)	NO	YES	Invoice is posted as Expense invoice in AX.
Actual payment date update sent to MediusFlow	NO	YES	
Add link to Invoice document in AX	YES		Uses AX standard document management framework to attach a URL link to the Invoice Journal and Vendor transaction.



#### 4.1 Regional compliance

The integration package is used by customers in several countries worldwide. Any country specific legal requirements, including but not limited to VAT compliance requirements, have to be analysed and identified by the parties in the project. Any additional services needed to ensure compliance with requirements not supported by the standard integration package may be provided by Medius on a time and material basis and will require a Change Order signed by the Parties.

### 5 AX Integration Requirements

In addition to the Technical Requirements for MediusFlow, these are AX Integration specific requirements to be able to deploy, configure, and troubleshoot integrations to MediusFlow.

An **integration server**, set up by customer to host the Medius Integration Gateway (MIG) application, **is required**.

The technical requirements for this server is described in the General Integration Requirements for MediusFlow.

#### 5.1 AX2009 (5.x) Component Requirements

On the Integration server hosting the Medius Integration Gateway, the following AX-components should be installed:

Component	Comment
AX2009 Business Connector	Must be the same version as the AOS
AX2009 Client	
AX2009 Debugger	
A folder (Or a shortcut to a folder) containing configuration files to:  AX - Development environment (Layer where customizations is supposed to be made - Best Practice is CUS) AX - Test environment (Layer where customizations is supposed to be made - Best Practice is CUS) AX - Prod/Live environment (USR-Layer)	

#### 5.2 AX2012 R2/3 (6.2, 6.3) Component Requirements

Component	Comment
AX2012 R2/R3 Business Connector	Must be the same version as the AOS
AX2012 R2/R3 Client	

Component	Comment
AX2012 R2/R3 Debugger	
<p>A folder (Or a shortcut to a folder) containing configuration files to:</p> <p>AX - Development environment (Layer where customizations is supposed to be made - Best Practice is CUS)</p> <p>AX - Test environment (Layer where customizations is supposed to be made - Best Practice is CUS)</p> <p>AX - Prod/Live environment (USR-Layer)</p> <p>AX Management Utils (AxUtil)</p>	

### 5.3 Integration Consultant User Access

Access	Comment
<p>Member of an AD-Group that is</p> <ul style="list-style-type: none"> <li>• Local administrator on the MIG-server</li> <li>• Member of the local group “Microsoft Dynamics AX Debugging Users” on the MIG-server</li> </ul>	
<p>In Ax:</p> <ul style="list-style-type: none"> <li>• System administrator rights in AX – Development</li> <li>• System administrator rights in AX – Test</li> <li>• System administrator rights in AX – Prod/Live</li> </ul>	<p>Possible to give the Integration Consultant time limited or no access in all AX environments depending on company policy. In that case the Integration consultant will need to gain temporary access during setup, verification, and troubleshooting of the integration. This can be done by a shared screen session or such but will generally lead to longer lead times in the project and during support.</p>