

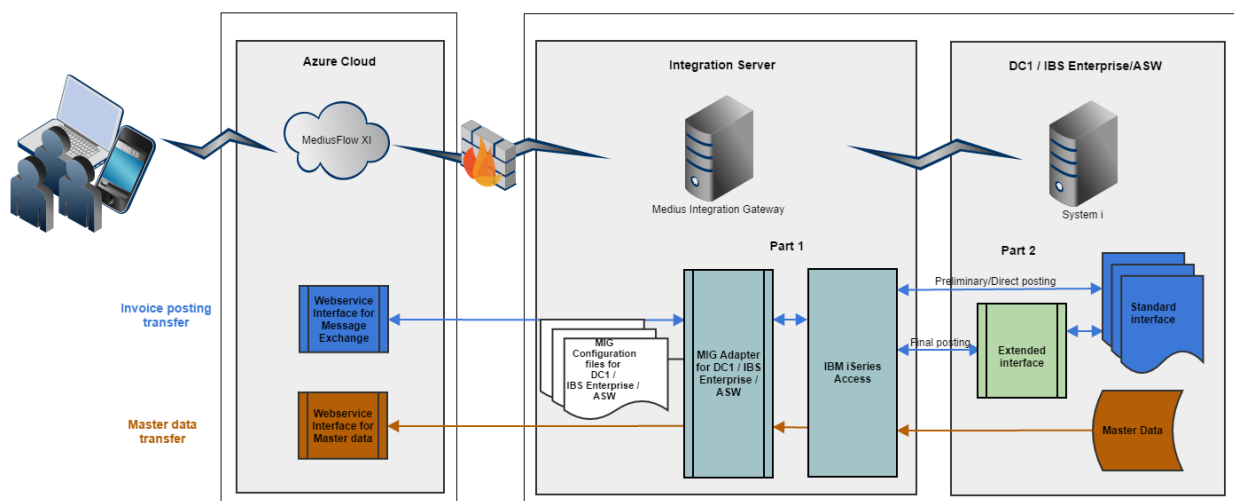
IBS Integration - Product definition

This document describes the supported content and functionality of the IBS integration package. This product definition was last updated November 25th, 2016.

1 Overview

This solution consists of two parts. One part is an adapter for Medius Integration Gateway (MIG), the Medius integration engine. The other part is the standard interface and the extended interface in DC1 / IBS Enterprise / ASW. The solution makes it possible to transfer master data (such as suppliers, accounts etc.) from DC1 / IBS Enterprise / ASW to MediusFlow. It also makes it possible to transfer invoice data from MediusFlow to DC1 / IBS Enterprise / ASW where the invoice data is handled automatically inside ERP. Once the posting is done DC1 / IBS Enterprise / ASW will also return a voucher or error message to MediusFlow.

Below is a picture of the whole system with the two parts of the solution marked as part 1 and part 2.



1.1 Master data flow

Data is transferred by SQL queries from the IBM DB2 database by Medius Integration Gateway (MIG).

Data is sent to MediusFlow integration web services where a workflow is started to process the incoming data.

1.2 Message Exchange Flow

Preliminary posting and direct posting directly to the standard interface of DC1 / IBS Enterprise / ASW

Final posting (from preliminary) through data-queues with validation before posting to general interface.

Response from ERP is returned either as voucher (posting was successful) or error messages.

2 Version dependencies

Since the DC1 / IBS Enterprise / ASW interfaces has some differences between versions the following matrix tells you what functionality that is included:

IBS Version	Integration Package Version	XI Version	Comment
ASW 4.x	5.1	Cloud / W16 or later	Not PO
ASW 5.x	5.1	Cloud / W16 or later	PO require customization in ASW
IBS Enterprise 6.x	5.1	Cloud / W16 or later	PO require a large number of corrections in IBS Enterprise
IBS Enterprise 7.x	5.1	Cloud / W16 or later	PO require a limited number of corrections in IBS Enterprise
IBS Enterprise 8.x	5.1	Cloud / W16 or later	PO require a limited number of corrections in IBS Enterprise
IBS Enterprise 9.x / DC1	5.1	Cloud / W16 or later	

3 MediusFlow Modules & Functions

Below you find a summary of the MediusFlow modules that are included in the DC1 / IBS Enterprise / ASW standard package.

Information in column "**Basic Setup**" means that the feature/functionality is included in the basic deployment and is based on Best Practices.

Information in column "**Custom Setup**" means further information about the customer's processes and system(s) setup is required in order to implement and thus requires additional consultant configuration work.

MediusFlow module	Basic Setup	Custom Setup	Comment
Contract	YES		
Invoice	YES		Preliminary, cancel and final posting
Match	YES		Preliminary, cancel and final posting
Procurement	YES	YES	Match invoice against MediusFlow PO is posted as expense.

4 Master data

Below you find a summary of the different master data entities.

Master data entity	Basic setup	Custom setup	Description	Limitations
Company	NO	NO	New companies added in DC1 / IBS Enterprise / ASW needs to be manually added in MediusFlow and set up for integration	
Currency rates	YES		Current Currency Rates are transferred	Weekly currency rates are not handled by default
G/L Accounts	YES		All G/L accounts are transferred. Will be set to inactive if status is "Inactive".	G/L Account in dimension 1 is assumed
Dimensions	YES		Includes a maximum of 8 dimensions (including the G/L account). Will be set to inactive if status is "Inactive"	
Dimension validations in DC1 / IBS Enterprise / ASW	YES		Includes the following dimension validations: Mandatory, Optional and May not be used. Account combination control limited to Dimension 1 and Dimension 2 Account completion	Account combination control for Dimension 3 to 8 is not supported
Fixed Assets	YES		Asset is supported by default and is handled in DC1 / IBS Enterprise / ASW	
Project (PCM)	NO	YES	Integration to PCM is available as an extension. Dimension 11 and 12 are used for phase and element.	
Allocation	YES		The user selects a start date and Accrual identification when coding the invoice.	
Tax Catalogues	NO	NO		Tax catalogues are not supported by MediusFlow.

Master data entity	Basic setup	Custom setup	Description	Limitations
Tax Codes	YES		Tax codes are replicated to MediusFlow. A filter may be used to limit the number of tax codes replicated to MediusFlow.	Percentage code must be defined for each tax code
Tax on invoice level	YES			
Tax on G/L level	YES			All accounts used from MediusFlow must have a tax catalogue
Payment Term	YES		Transfers all payment terms to be able to calculate due date on invoice.	
Supplier	YES		All Suppliers are transferred to MediusFlow	Requires default Tax group and payment terms to transfer.
Suppliers Item numbers	YES		Item table for cross reference in connection between PO lines and invoice lines.	
Purchase orders	YES		Integration will transfer Purchase orders and purchase order lines for POs that are approved or confirmed (status = 60) as long as the lines are not canceled or invoiced.	
Goods receipts	YES		Integration will transfer Goods receipt lines that are not fully invoiced.	

4.1 Message Exchange

Below you find a summary of the different invoice posting scenarios.

Posting scenarios	Basic Setup	Custom Setup	Description
Preliminary and final postings sent from MediusFlow	YES		Postings done via DC1 / IBS Enterprise / ASW standard interface
Cancellation of registered invoices	YES		Cancellation of preliminary invoices through DC1 / IBS Enterprise / ASW standard interface
Only Final Postings sent from MediusFlow	YES		Posting done via DC1 / IBS Enterprise / ASW standard interface
Allocation	YES		Allocations are created by the DC1 / IBS Enterprise / ASW integration.

Posting scenarios	Basic Setup	Custom Setup	Description
Period management	YES		Possible to move to next open period including considering Module statuses. Periods are created by the integration and are maintained in MediusFlow.
3-way matching	YES		
2-way matching	NO	NO	
Invoice match with return orders (negative receipt lines)	YES		
Adjustment requests with block and release payments	NO	NO	Functionality to send a payment block on original invoice is not included
Contract based invoice (Contract module)	YES		
Procurement invoice (Procurement module)	NO	YES	Invoice handling is included in basic setup but not configuration of the Procurement module
Project (PCM)	NO	YES	
Actual payment date update sent to MediusFlow	YES		Payment date is replicated to DC1 / IBS Enterprise / ASW when payment proposal (with full payment of invoice) has been created.
Add link to Invoice document in IBS	NO	YES	May be handled by using the IBS XT-client functionality

5 DC1 / IBS Enterprise / ASW Integration Requirements

In addition to the Technical Requirements for MediusFlow, these are DC1 / IBS Enterprise / ASW Integration specific requirements to be able to deploy, configure, and troubleshoot integrations to MediusFlow.

An **integration server**, set up by customer to host the Medius Integration Gateway (MIG) application, **is required**.

The technical requirements for this server is described in the General Integration Requirements for MediusFlow.

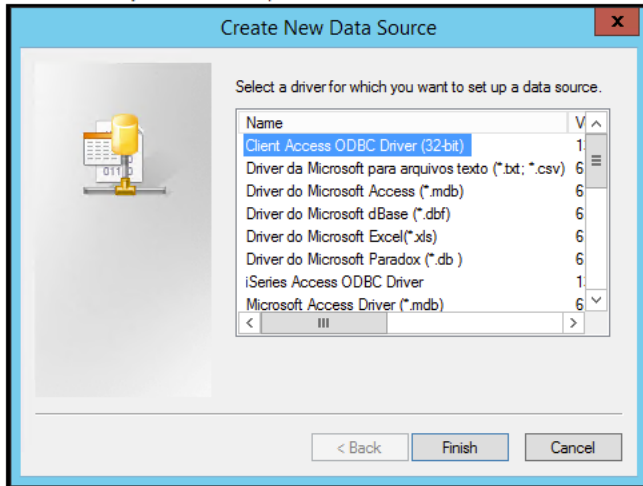
Depending on DC1 / IBS Enterprise / ASW release and MediusFlow functionality to be used (Expense/PO) a number of programs and corrections must be installed in DC1 / IBS Enterprise / ASW. Please consult Iptor regarding this.

5.1 IBM iSeries Access

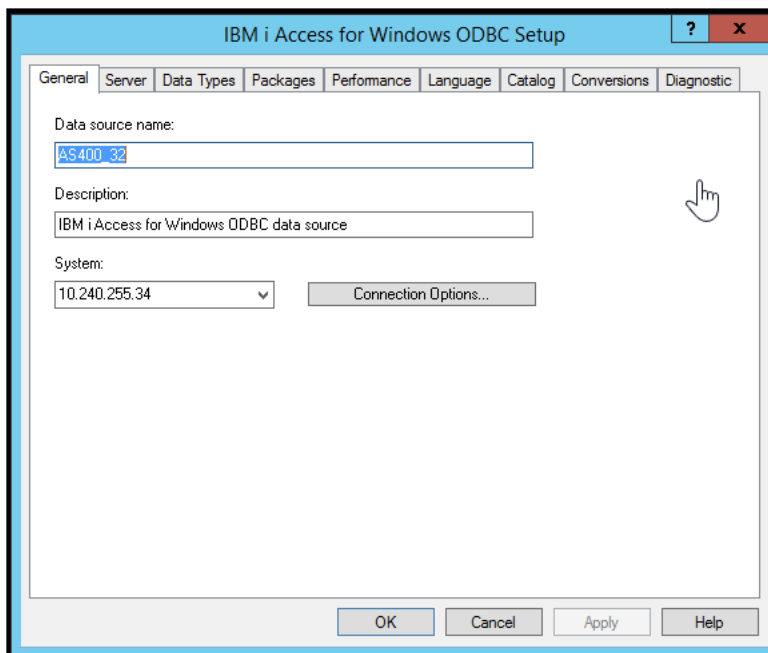
To be able to access IBS a ODBC connections needs to be setup.

- Customer needs to install IBM iSeries Client Access Express on the MIG-server. Needs to be same version as on the IBS-server.
- Install all modules/full installation

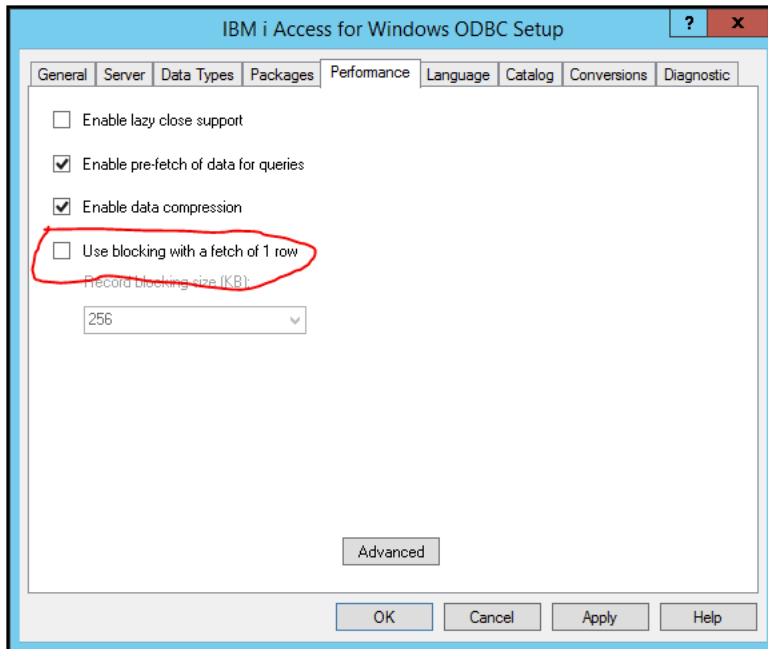
- Go to "C:\Windows\SysWOW64\odbcad32.exe"
- Go to the tab *System DSN* and press *Add..*



- Choose *iSeries Access ODB Driver* and click *Finish*
- Input a name, for example "AS400_32" and make sure that system is pointed to the correct URL.



- Go to the *Performance* tab and disable *use blocking with fetch 1 row*



- Click *Apply* and the ODBC is ready to be used.

5.2 Access within IBS

Two user accounts in DC1 / IBS Enterprise / ASW are needed

- Service user - Needs access to database and dataqueues (normal DC1 / IBS Enterprise / ASW user - disable login possibility) Select a strong password that never expires
- Test/configuration user - Needs access to DC1 / IBS Enterprise / ASW test and production companies with financial/purchase profile